

How we Volunteer Together
Adopting a team-based approach

District Structure

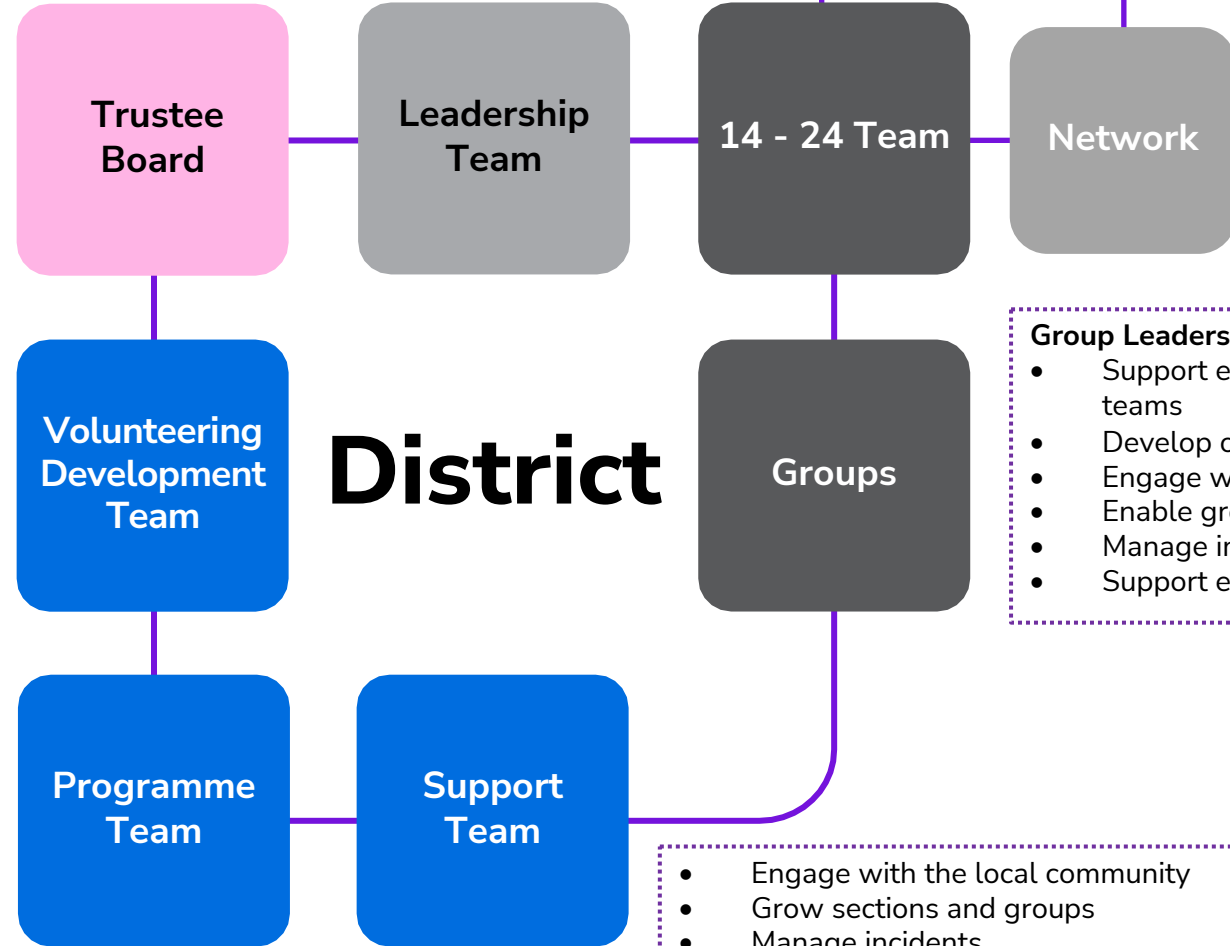


- Make sure all District teams work well
- Make sure all teams are inclusive and reflective of the local community
- Make sure safety and safeguarding responsibilities are fulfilled
- Support the District Youth Lead to make sure decisions are shaped by young people

- Look after the money
- Ensure buildings and equipment are in good working order
- Manage a risk register
- Make sure everyone follows legal requirements

- Attract and welcome new volunteers to Group and District teams
- Make sure volunteers are well-supported
- Make sure volunteers are recognised

- Help section teams run high-quality programmes
- Facilitate programme networking opportunities
- Provide access to specialist expertise
- Manage approvals for activities and permits



- 14-24 Team, for their Sections**
- Support each Explorer, Young Leader and Scout Network section team

- Group Leadership Teams**
- Support each of their section teams
 - Develop our volunteers
 - Engage with the community
 - Enable growth and new provision
 - Manage incidents
 - Support effective processes

- Engage with the local community
- Grow sections and groups
- Manage incidents
- Manage administration, property and equipment